



AR Books
libRARY

TRY IT!

GEOMETRY AUGMENTED REALITY BOOK

DEAR INQUIRER,

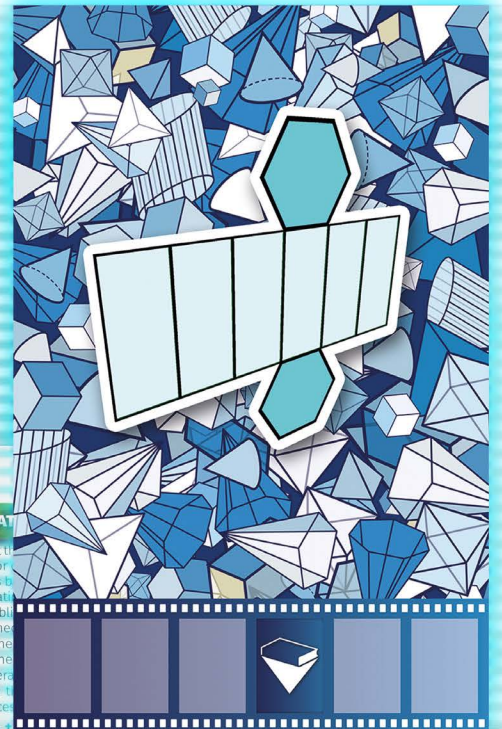
With the help of this test page you can try the augmented reality experience for free. We have brought one of our 40 topics as a sample, so you can get an idea of what awaits you in the book.

- 1 Print this page in colour or black and white!
- 2 Download our **AR Books LibRARY** app.
Use the QR code or visit arbookslibrary.com/app.
- 3 After starting the application, press the PLUS button to add the test publication using the text code or the QR code.
- 4 Click "Try it!" publication, then point the camera of your mobile device at the image shown here.

Text code:
TRYIT



Enjoy the WOW experience!



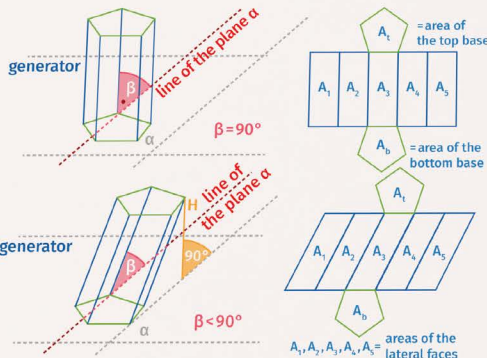
24

RIGHT & OBLIQUE

We are surrounded by right prism-shaped buildings (such as blocks of flats), while in nature, we can admire, for example, the fascinating oblique prism-shaped basalt tuffs of the Medves Plateau in the Bükk National Park, Hungary.

WHAT IS IT CALLED?

If the parallel generators of a prism are not perpendicular to the plane of the base, then it is an **oblique prism**. In this case, the angle between the generators and the base is an acute angle, which is less than 90° . Its lateral faces are parallelograms. The **prism is right** if the generators are perpendicular to the plane of the base. The development of the lateral surface of a right prism is always a rectangle whose width is equal to the perimeter of the base, and its height is equal to the length of the generator.

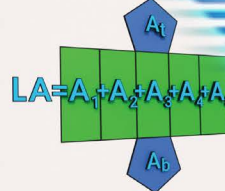


HOW TO CALCULATE

It is already known that the surface area (**SA**) of a prism (right or oblique) is the sum of the areas of its two bases and the area of its lateral surface. However, when calculating the surface area (**SA**), in the case of an oblique prism, the height (**H**) is determined by drawing a perpendicular line from the top base to the plane of the bottom base. The length of the generator (**G**) is equal to the length of the lateral face.

$$SA = A_b + A_t + A_1 + A_2 + A_3 + A_4 + A_5$$

$$V = A_b \cdot H$$



TEST YOUR KNOWLEDGE

1. True or false?

- The length of the generator of a right prism can be shorter than its height.
- The generator of an oblique prism is perpendicular to the plane of the base.
- The height of an oblique prism is perpendicular to the plane of the base.
- The lateral faces of a right prism can be squares.
- The lateral surface of an oblique prism consists of parallelograms.
- The bottom and top bases of a right prism are congruent polygons.